

# Wild Azalea, Inc.

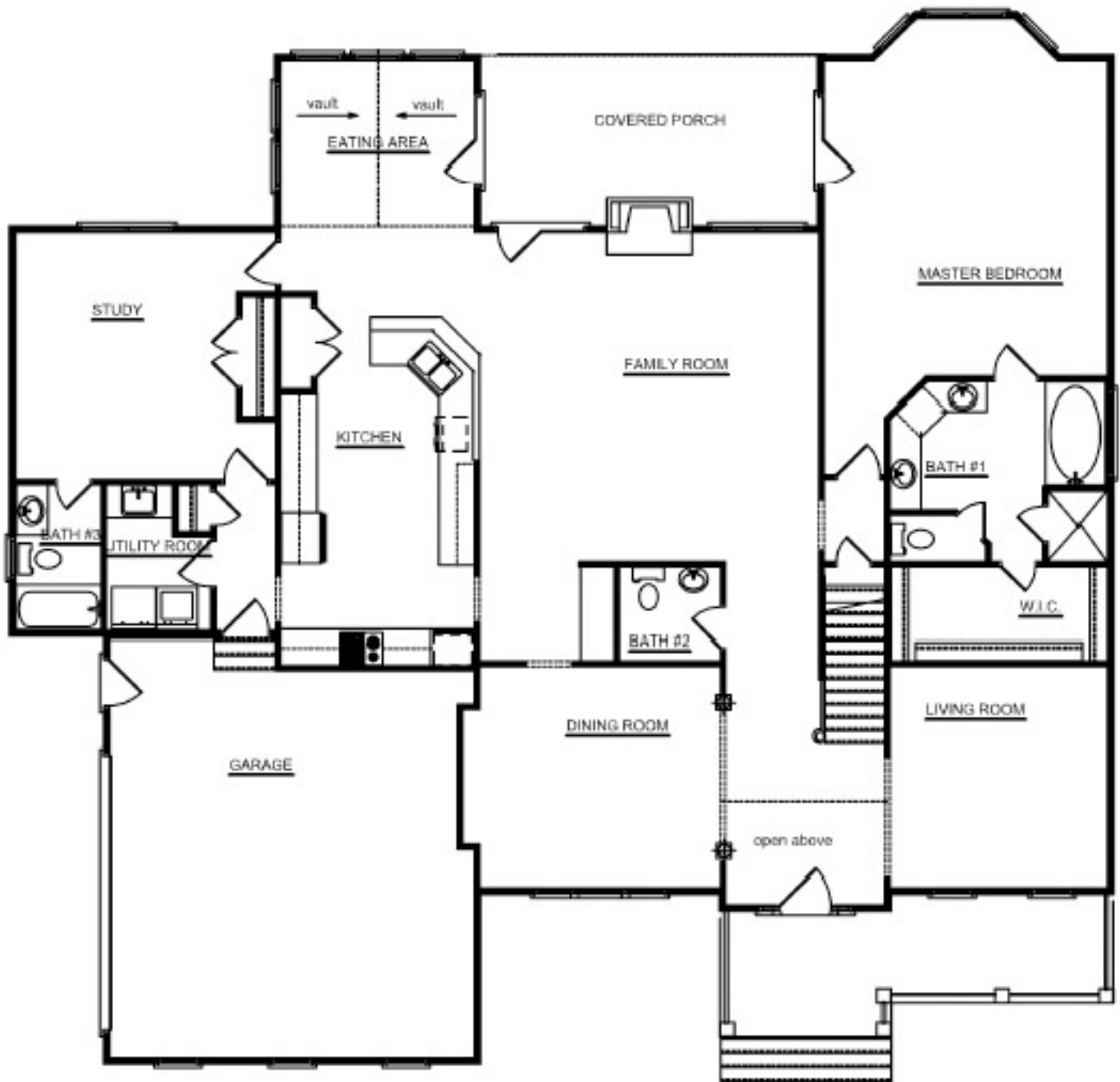
the Calaway plan



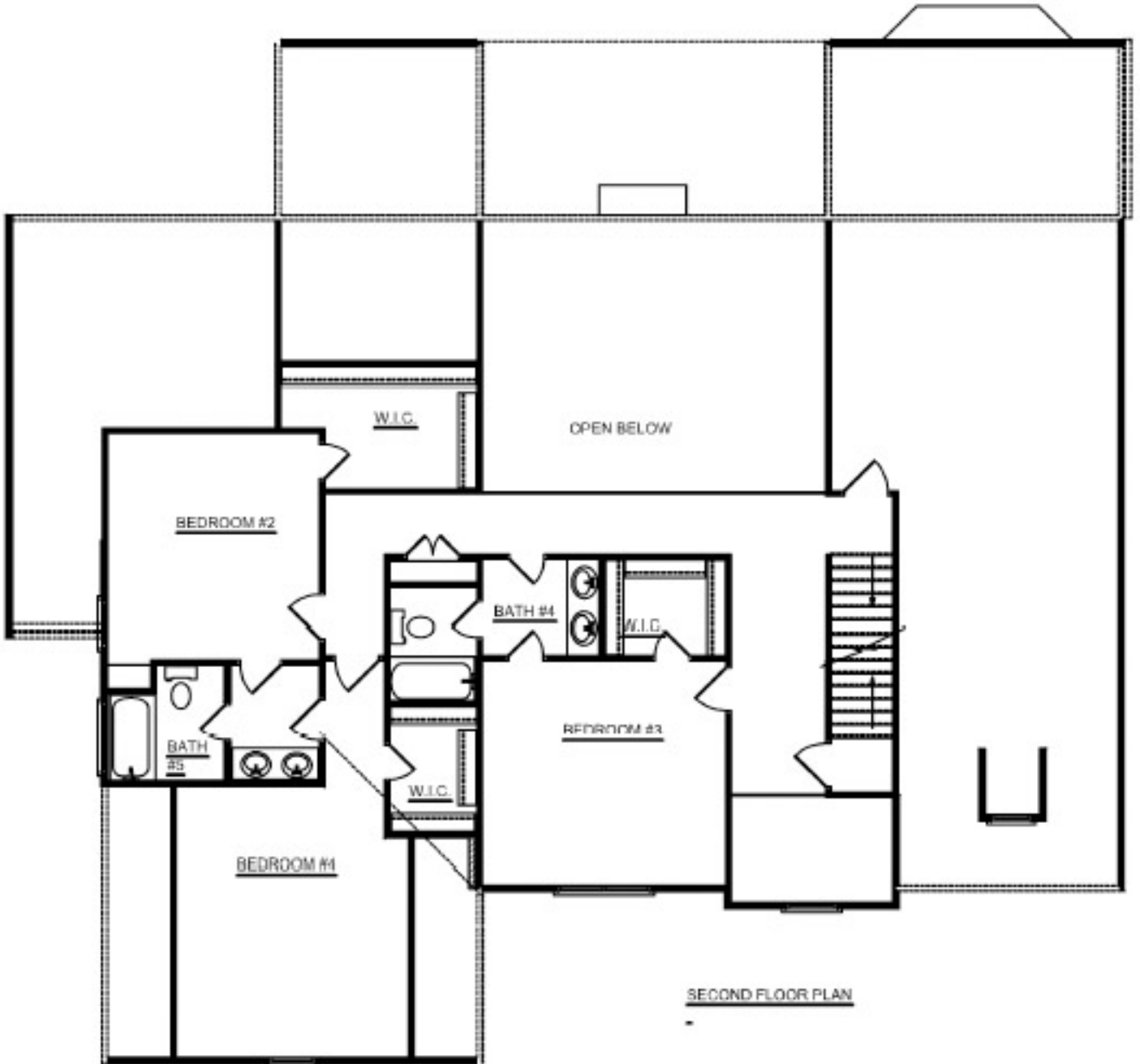
FRONT ELEVATION

Construction & completion of the above referenced house shall be in accordance with seller's "COPYRIGHT" plans and specifications. Seller reserves the right to substitute material, equipment and appliances of equivalent quality and make changes in the plans and specifications, including dimensional, mechanical & structural changes, provided that such changes shall not significantly adversely affect the quality & value of the house. NOTE: COMPLETED CONSTRUCTION (AS BUILT SPECIFICATIONS) TAKES PRECEDENCE OVER THESE WRITTEN SPECIFICATIONS. INFORMATION HEREIN IS DEEMED RELIABLE BUT IS NOT GUARANTEED.

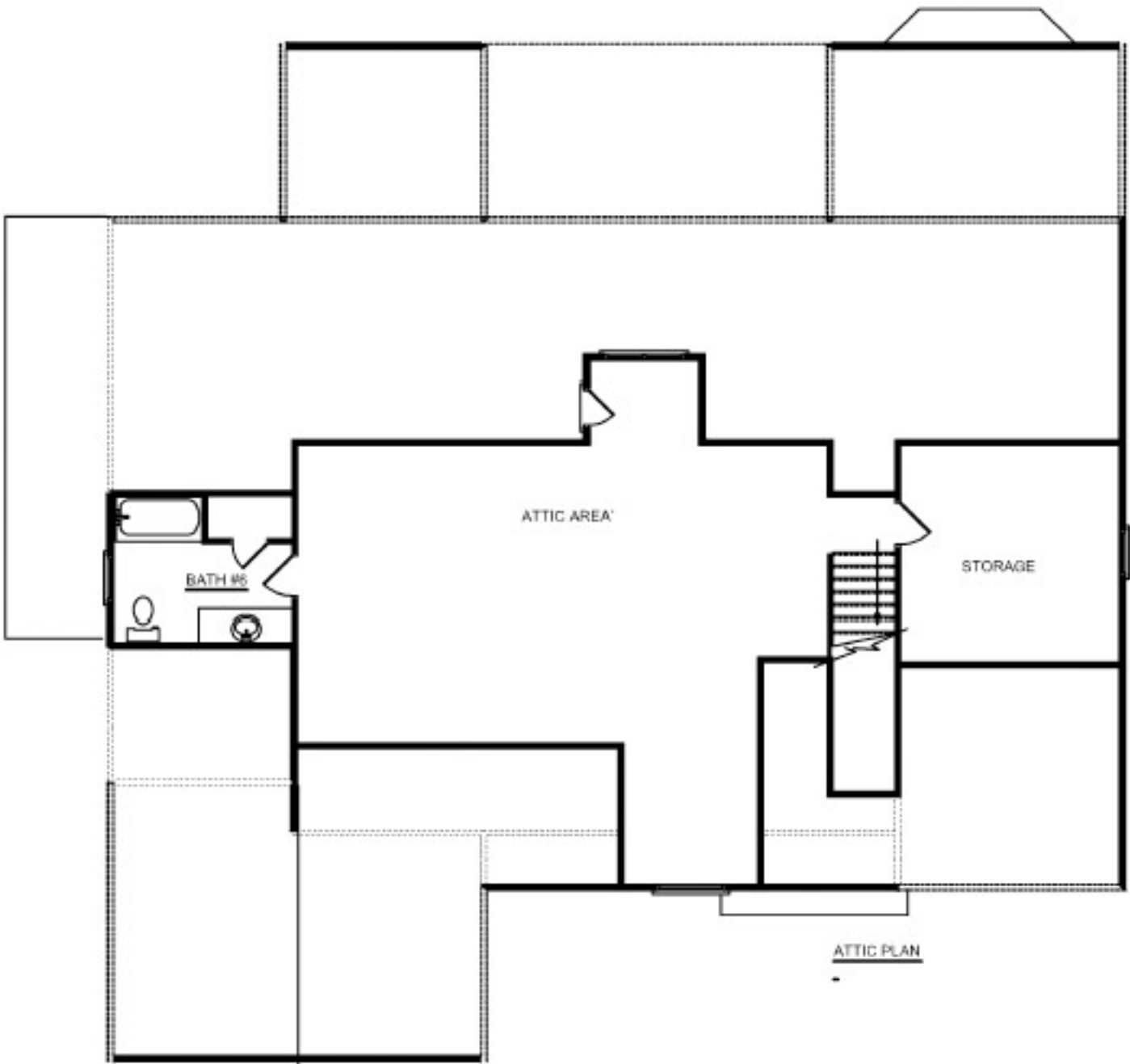
---



FIRST FLOOR PLAN



SECOND FLOOR PLAN



ATTIC PLAN

-